

# Welding positioner POS 750

Item no: 71801165

M = manual tilting

Item no: 71801165AC

MC = manual tilting with overlap welding

item no: 71801165S

AC-S = motorical tilting with overlap welding and servo-motor



**TUV NORD**

## Features

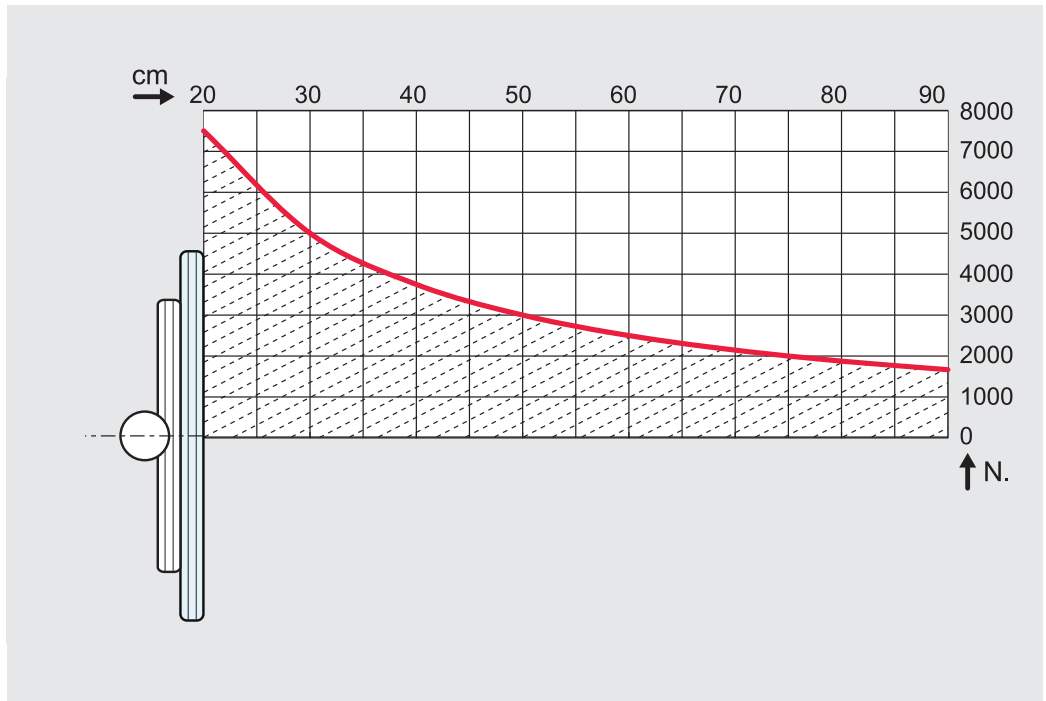
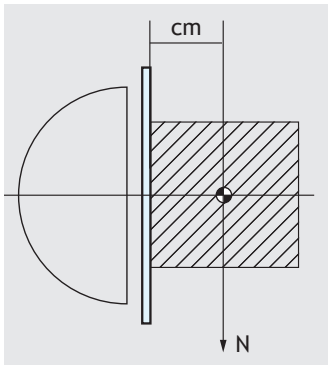
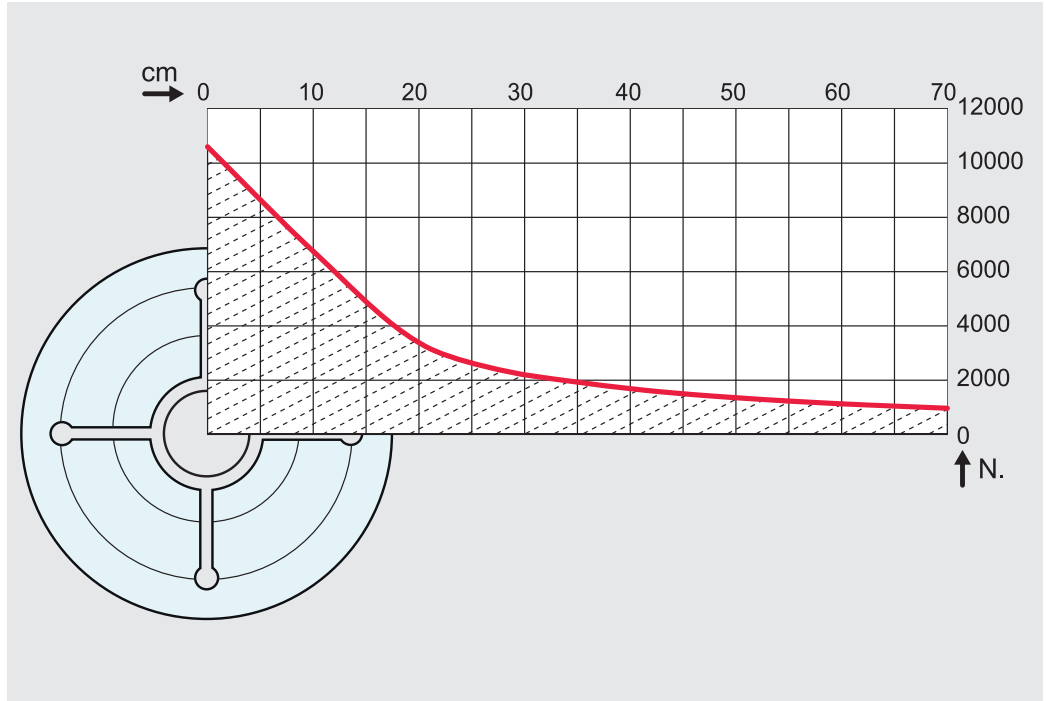
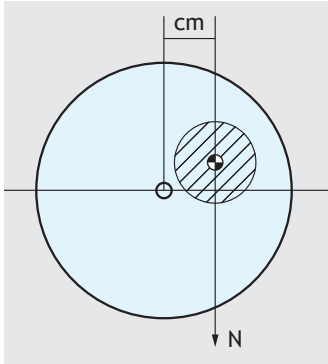
- Table can be tilted manually from 0° to 135°.
- Foot switch start/stop.
- Rotating direction adjustable: cw/ccw.
- 60 mm hollow shaft.
- Table diameter: 600 mm. .
- Table speed adjustable from 0,12 – 1,2 or from 0,05 – 5 rpm.
- Welding machine can be actuated via turntable control.
- Mass contact transmits 400A/100%.
- Control unit available with overlap welding, HF-prot.



Model	POS-750A / 750AC
Supply voltage	AC 400 V/50 Hz
Ground connection	400 A/100 %
Tilting range	0° – 135°
Table diameter	600 mm
Hollow shaft	60 mm
RPM standard optional: servo-motor	A: 0,12 – 1,2 rpm B: 0,05 – 5 rpm
Rotating directions	cw/ccw
Turning moment Tilting moment	675 Nm 1500 Nm
Remote control	RPM/rotating direction adjustable
Max. load A	800 kg
Measurements (LxWxH) mm	ca. 704 x 650 x 585
Weight	ca. 334 kg

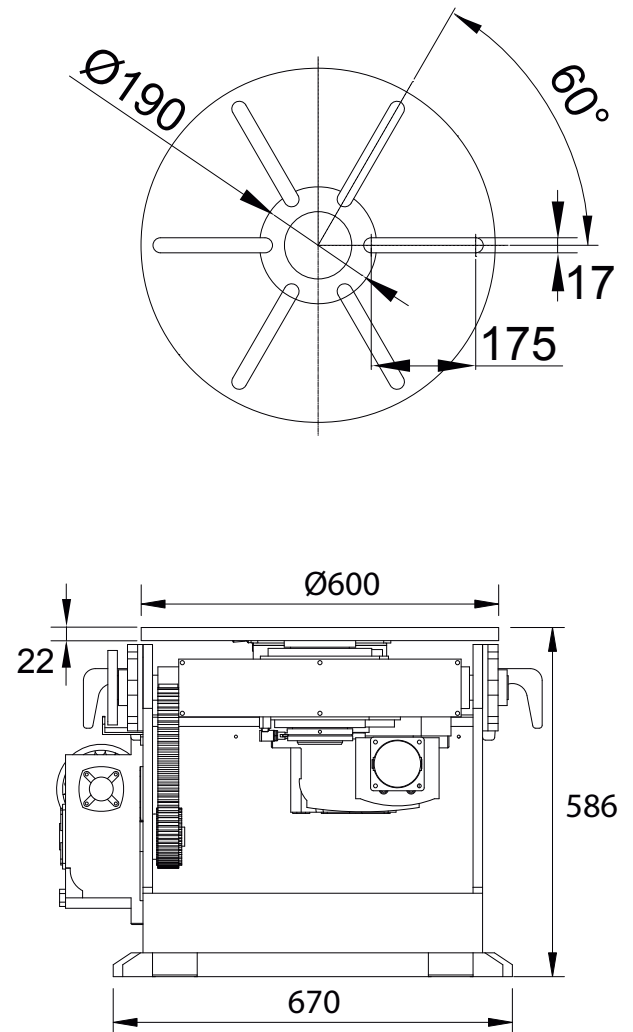
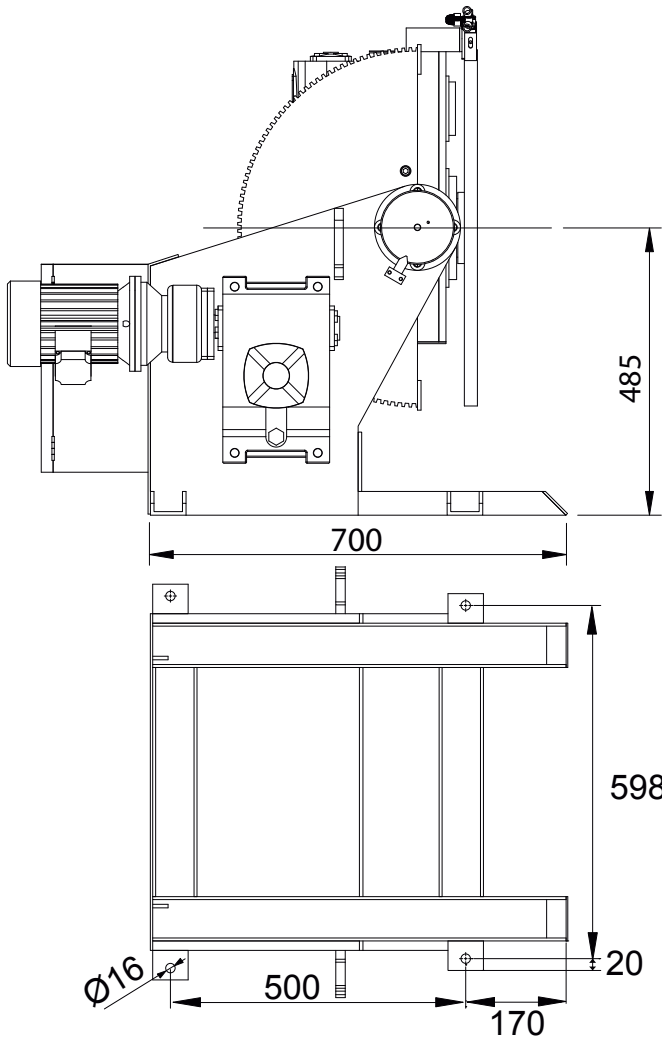
# Welding positioner POS 750

## Load diagram



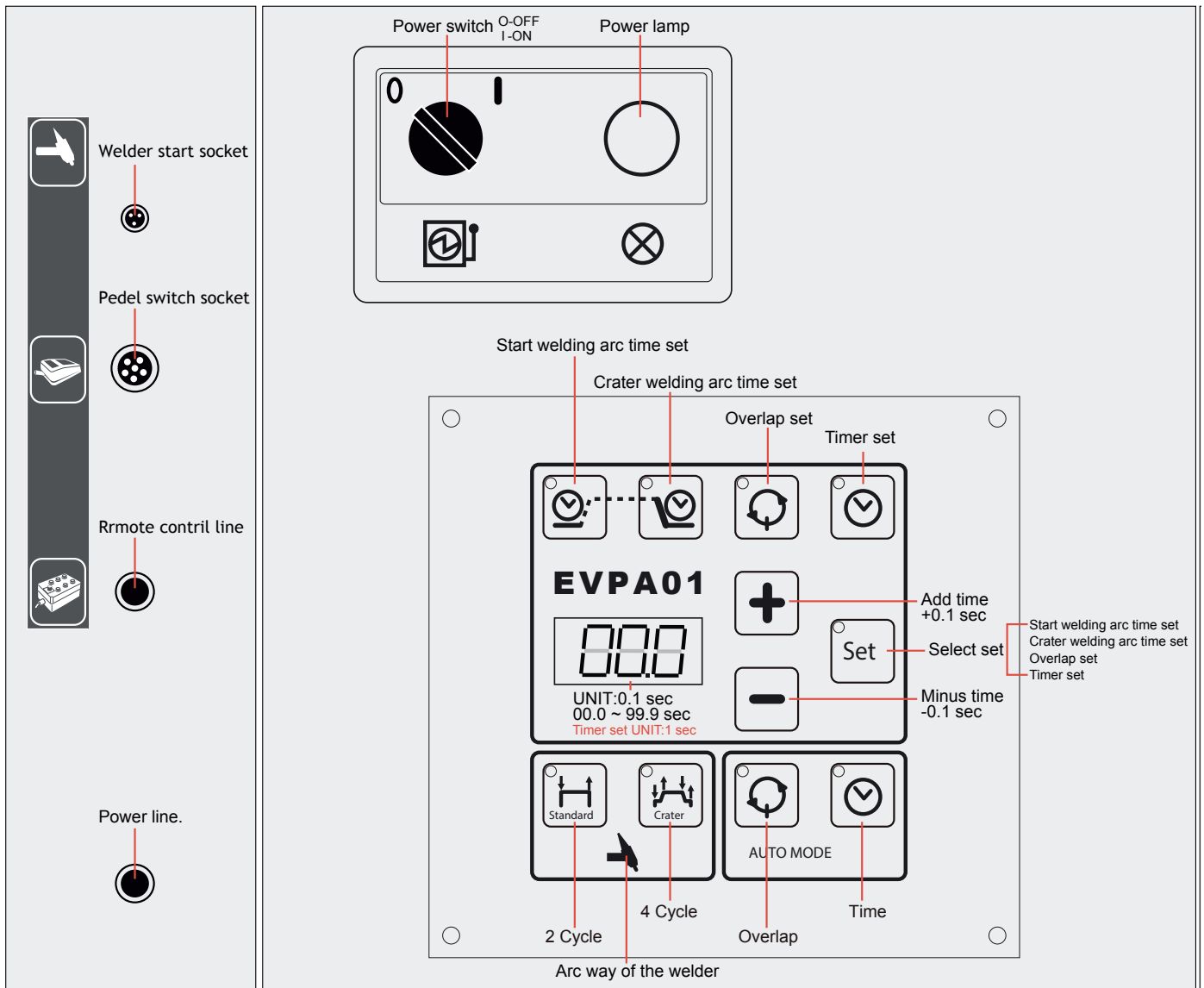
# Welding positioner POS 750

## Size



# Welding positioner POS 750

## Control Box POS 750AC



# Welding positioner POS 750

## Remote control

