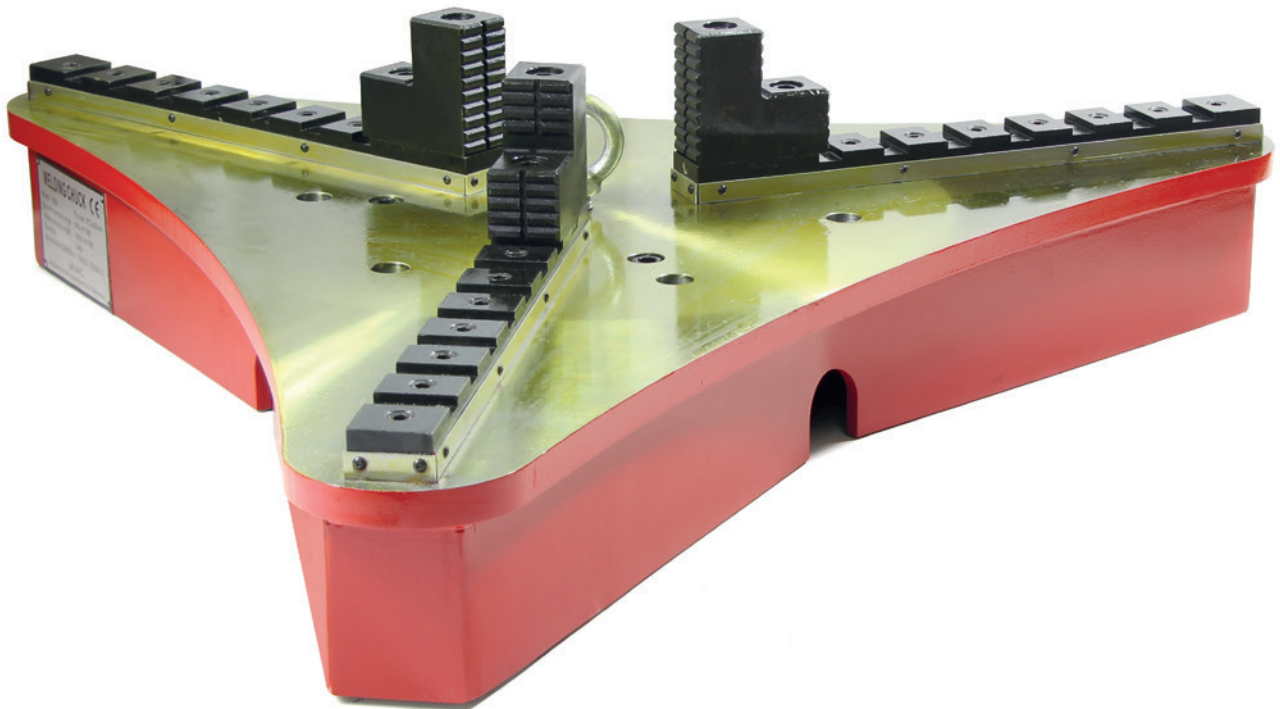


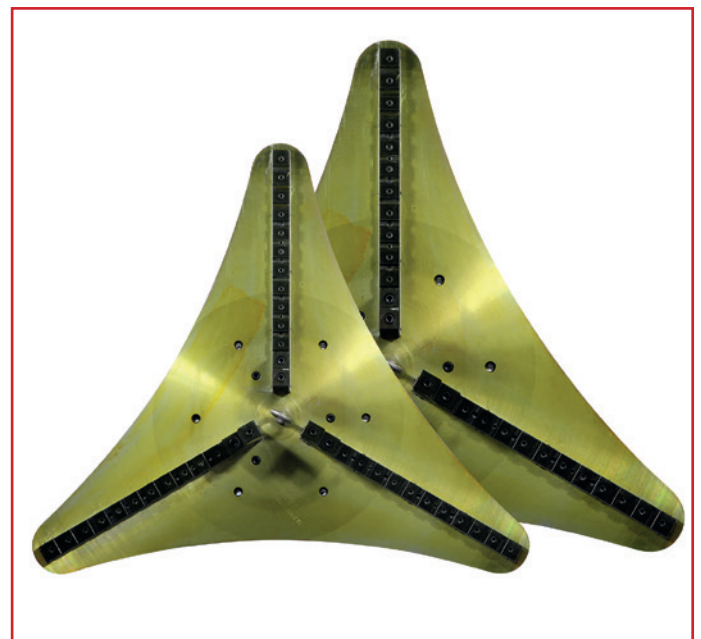
Three-jaw chuck – for heavy loads



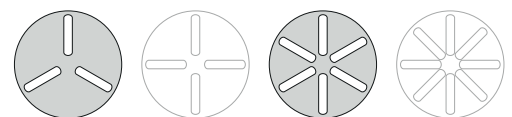
Features

- Chuck for tensioning workpieces, especially for welding.
- Robust design.
- Closed housing.
- Jaws can be adjusted fast and easily to different diameters.

Size comparison of Chuck 1000
and Chuck 1500



Model	Chuck 1000	Chuck 1300	Chuck 1500
Outer tensioning range	110 – 1.030 mm	85 – 1.300 mm	110 – 1.530 mm
Inner tensioning range	20 – 940 mm	20 – 1.300 mm	20 – 1.440 mm
Mounting hole circle	450 mm	500 mm	450 mm
Hollow shaft	no	no	no
Max. load	1.500 kg	1.500 kg	2.500 kg
Weight	205 kg		260 kg
Item no.	91919210		91919215



The jaw chuck of this series fit without modifications to the JAVAC rotary tables with three and six grooves.

Three-jaw chuck – for heavy loads

Size Chuck 1500

