

CYLINDER REGULATOR

GCE BaseControl® DIN



EDITION 1/2016

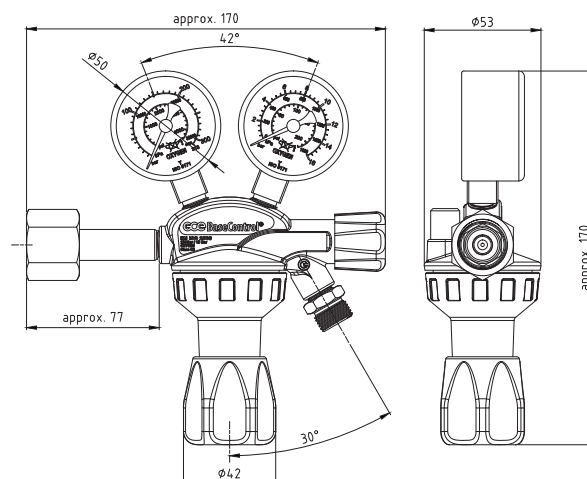
- Cylinder regulator conforming to ISO 2503
 - Small in size but robust in features
 - Fits to all cylinders from 5 liters to 50 liters
 - Safe operation with compressed gases up to 230 bar cylinder filling pressure
 - Gas specific cylinder connection according to standards
- Available in following variants:
 - Oxygen 230/10 bar
 - Acetylene 25/1,5 bar
 - Propane 25/4 bar
 - Ar/Ar-CO₂ mixtures 230/24 l/min
 - CO₂ 200/24 l/min
- Oxygen adiabatic shock safety
- Regulating valve protected against mechanical particles of size 50µm by inlet filter
- Protection of the low pressure part with integrated pressure relief valve
- Pressure values are shown on the gauges in three major pressure units scales: Bar, kPa, psi
- Flow gauge showing the value in litres per minute (l/min)
- Useful in various applications as e.g.:
 - Shielding gas arc welding
 - Flame welding
 - Oxy-fuel cutting
 - Flame brazing
 - Different heating processes
 - Flame spraying



TECHNICAL DATA

	OXYGEN	Ar, Ar/CO ₂	CO ₂	ACETYLENE	PROPANE
Body	Brass forged				
Bonnet	Zn/Al alloy Die-casted				
Stems, nuts nad fittings	Brass				
Diaphragm	EPDM				NBR
Seat sealing	PA			CR	
Inlet/Outlet connection	Gas specific connection				
Maximal inlet pressure	230bar	230bar	200bar	25bar	25bar
Outlet pressure range	0-10bar	0-24l/min		1,5bar	4bar
Temperature range	from -20°C to 60°C				
Weight	Approx. acc.to gas variant: 1,18 kg				
ISO 2503 Class	3	20	20	2	1

MEASUREMENTS



PRODUCT DESCRIPTION

1 CYLINDER CONNECTION

Gas specific inlet connection is used on each version of the GCE BaseControl®. Quality sealing faces and brass nut ensure gas tight connection with cylinder valve.

2 INLET STEM

Inlet stem is made of brass. It is designed for up to 230 bar inlet pressure and contain high-pressure sintered filter.

3 PRESSURE RELIEF VALVE

PRV is the safety device protecting low-pressure chamber of the regulator against over pressurizing from high-pressure chamber. PRV relieves out of the regulator the pressure which could exceeded adjusted safe value in case of malfunction or accident.

4 OUTLET CONNECTION

The outlet of the GCE BaseControl® is prepared to make gas-tight connection with outlet flashback arrestor or hose nipple.

5 HANDWHEEL

Ergonomic plastic hand wheel allowing the operator to correctly adjust the outlet pressure or flow rate. The pressure adjustment system gives the possibility to set the optimal outlet parameter according to application request.

6 PRESSURE GAUGES

Both high pressure and low pressure gauges show the value on three scales: bar, kPa (kilo pascal) and psi (pound per square inch). The connection to the regulator body is G1/4". Gauges 50mm diameter conform to ISO 5171.

7 BODY AND BONNET

The body of the GCE BaseControl® is forged from pressure resistant brass. The channels and faces inside the body are machined using latest technology of CNC machines and tools. The bonnet is Die-casted from the Zn-Al alloy to prepare optimal space for pressure adjustment system and other internal components. Connection between body and bonnet is designed to give high resistance against external and internal stress.

