

Modular Positioner Systems

Welding Positioner PRO 2

With 60 mm hollow shaft

Features

- Tilting and clamping from 0° to 90°.
- Start/stop via location-independent foot switch.
- Rotating direction adjustable: cw/ccw.
- Rotating time adjustable.
- 60 mm hollow shaft.
- Table diameter: 340 mm. The surface is chrome-plated as a protection against weld spatters.
- Table speed adjustable from 0,6 – 6 rpm.
- Welding machine can be actuated via turntable control.
- Mass contact transmits 300A / 100 %.
- Turntable and control are separated.
- **HF-protected.**



Scope of delivery:

- 1 Control system (opt.)
- 1 Foot switch

Model	PRO 2
Supply voltage	AC 230 V/50 Hz
Ground connection	300 A/100 %
Tilting range	0° – 90°
Table diameter	340 mm
Speed	0,6 – 6 rpm
Rotating directions	cw/ccw
Max. load A	160 kg
Max. load B	100 kg
Hollow shaft	60 mm
Measurem. (L x W x H) mm	385 x 340 x 375
Weight	56 kg
Item no.	71801114

Max. load of PRO 2 in horizontal position:
160 kg



- COM-1000: easy control start/stop, cw/ccw
- COM-1800: with overlap welding function (standard)
- COM-1800 VSF: with potentiometric foot switch

Detailed information on
PRO-turntable control systems
on page 3.10!

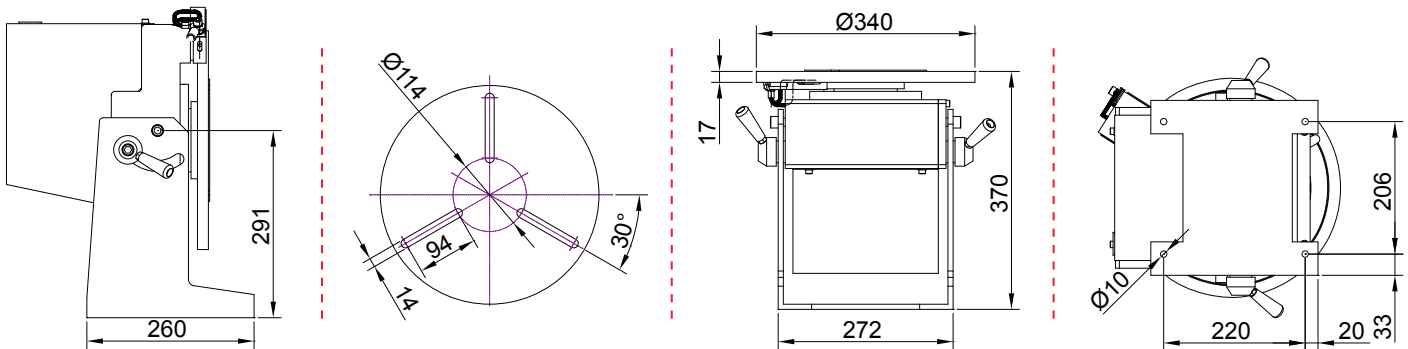
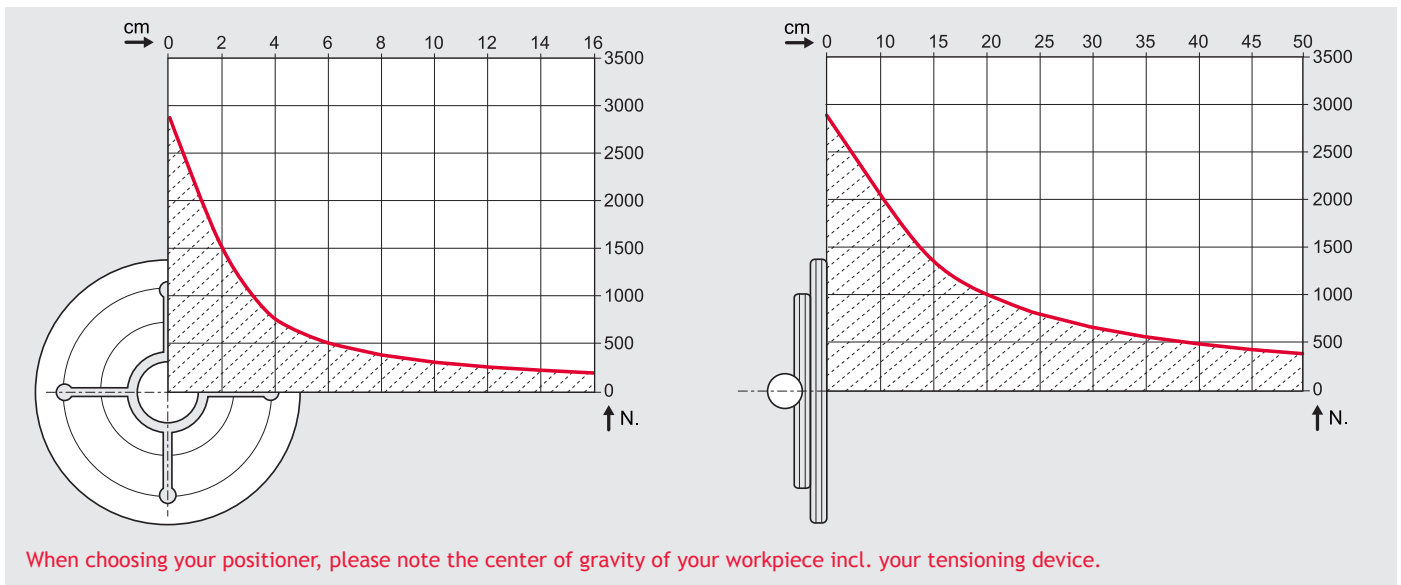


Modular Positioner Systems

Welding Positioner PRO 2

Perfectly positioned

When choosing a turntable, the turning and tilting moment must be considered by all means. The distance between the center of gravity of the workpiece and the faceplate must be considered and the eccentric distance of the center of gravity and the center respectively. Don't forget the weight of the clamping device. It is often higher than the weight of the workpiece itself. The workpieces can be positioned optimally for welding with a turning and tilting table. This improves productivity and quality significantly.



Note



Automate your welding processes at low cost, easy and efficiently. Read more on page 5.00.