

Modular Positioner Systems

Welding Positioner PRO 3

With 60 mm hollow shaft

Features

- Tilting and clamping from 0° to 90°.
- Start/stop via location-independent foot switch.
- Rotating direction adjustable: cw/ccw.
- Rotating time adjustable.
- 60 mm hollow shaft.
- Table diameter: 340 mm. The surface is chrome-plated as a protection against weld spatters.
- Table speed adjustable from 0,6 – 6 rpm.
- Welding machine can be actuated via turntable control.
- Mass contact transmits 300A/100%.
- Turntable and control are separated.
- HF-protected.



Scope of delivery:

- 1 Control system (opt.)
- 1 Foot switch

| Model | PRO 3 |
|-----------------------------|-----------------|
| Supply voltage | AC 230 V/50 Hz |
| Ground connection | 300 A/100 % |
| Tilting range | 0° – 90° |
| Table diameter | 340 mm |
| Speed | 0,6 – 6 rpm |
| Rotating directions | cw/ccw |
| Max. load A | 290 kg |
| Max. load B | 190 kg |
| Hollow shaft | 60 mm |
| Measurements (L x W x H) mm | 380 x 340 x 425 |
| Weight | 62 kg |
| Item no. | 71801116 |

Max load of PRO 3 in horizontal position:
290 kg.



- COM-1000: easy control start/stop, cw/ccw
- COM-1800: with overlap welding function (standard)
- COM-1800 VSF: with potentiometric foot switch



Detailed information on
PRO-turntable control systems
on page 3.10!

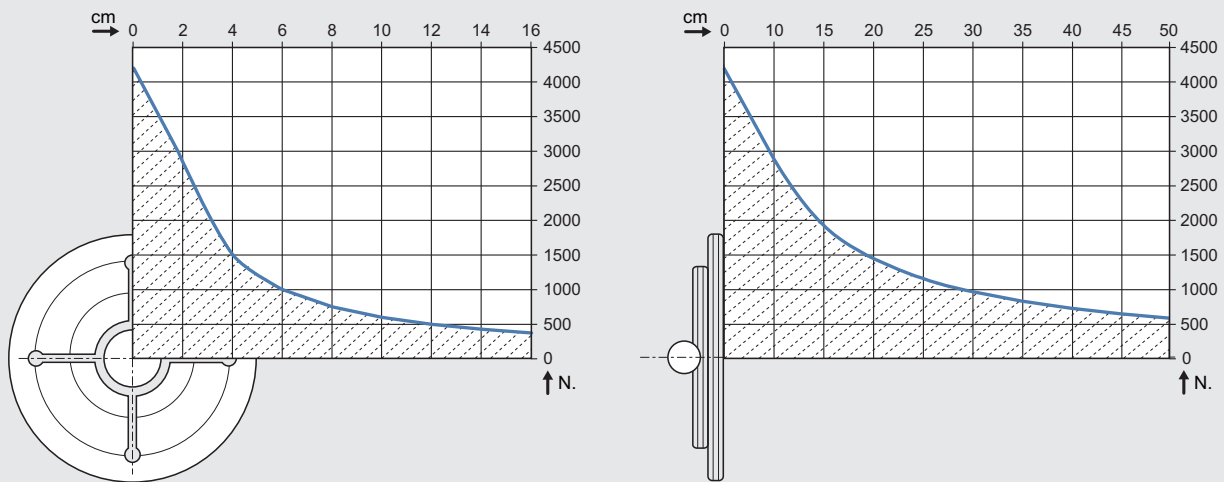


Modular Positioner Systems

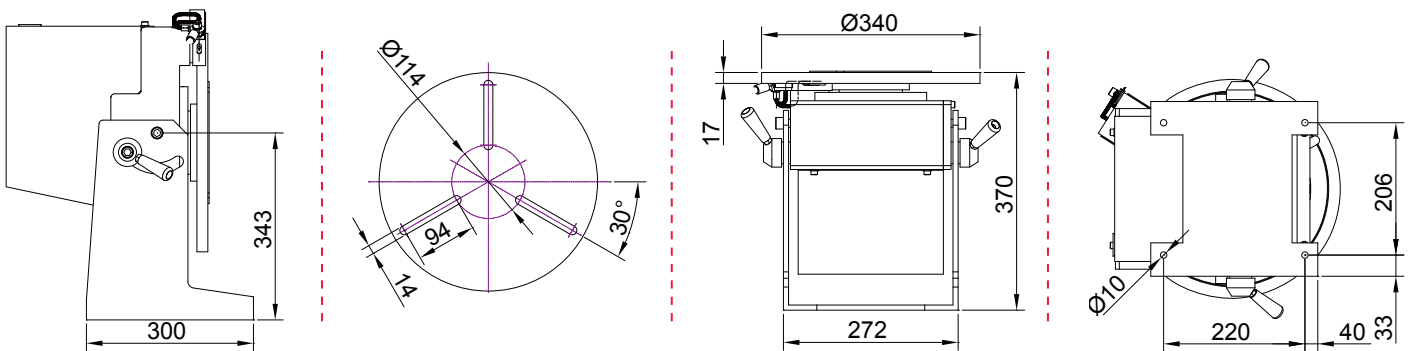
Welding Positioner PRO 3

Perfectly positioned

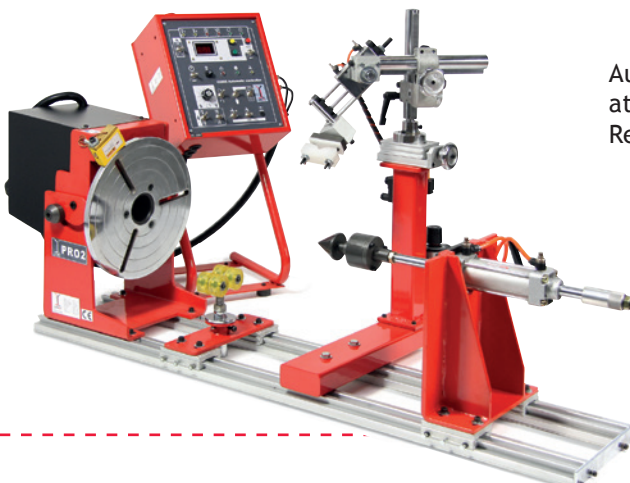
When choosing a turntable, the turning and tilting moment must be considered by all means. The distance between the center of gravity of the workpiece and the faceplate must be considered and the eccentric distance of the center of gravity and the center respectively. Don't forget the weight of the clamping device. It is often higher than the weight of the workpiece itself. The workpieces can be positioned optimally for welding with a turning and tilting table. This improves productivity and quality significantly.



When choosing your positioner, please note the center of gravity of your workpiece incl. your tensioning device.



Note



Automate your welding processes at low cost, easy and efficiently. Read more on page 5.00.