

PRO-Line Positioners

Welding Positioners PRO 1

With 20 mm hollow shaft

Features

- The turntable PRO 1 has a precise drive unit with face-plate that is mounted on a stable floor stand.
- The tilting bracket offers the possibility to put the workpiece via a tilting range of 0° – 90° into the required welding position.
- The rotary motion occurs via a direct current gearmotor with worm gear and is infinitely adjustable.
- Table diameter: 300 mm. The surface is chrome-plated as a protection against weld spatters.
- The control panel is easy to understand and operate.
- Start/stop via location-independent foot switch.
- Adjustment of turning speed and rotating direction directly via the machine.
- **HF-protected.**



Scope of delivery:

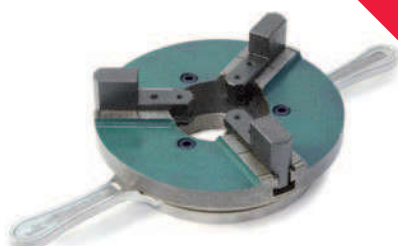
- 1 Control system (integrated)
- 1 Foot switch

Model	PRO 1
Supply voltage	AC 230 V/50 Hz
Ground connection	300 A/100 %
Tilting range	0° – 90°
Table diameter	300 mm
Hollow shaft	20 mm
Speed	A: 0,2 – 2 rpm B: 1,2 – 12 rpm
Rotating directions	cw/ ccw
Max. load A	100 kg
Measurem. (L x W x H) mm	480 x 325 x 470
Weight	50 kg
Item no.	71801118



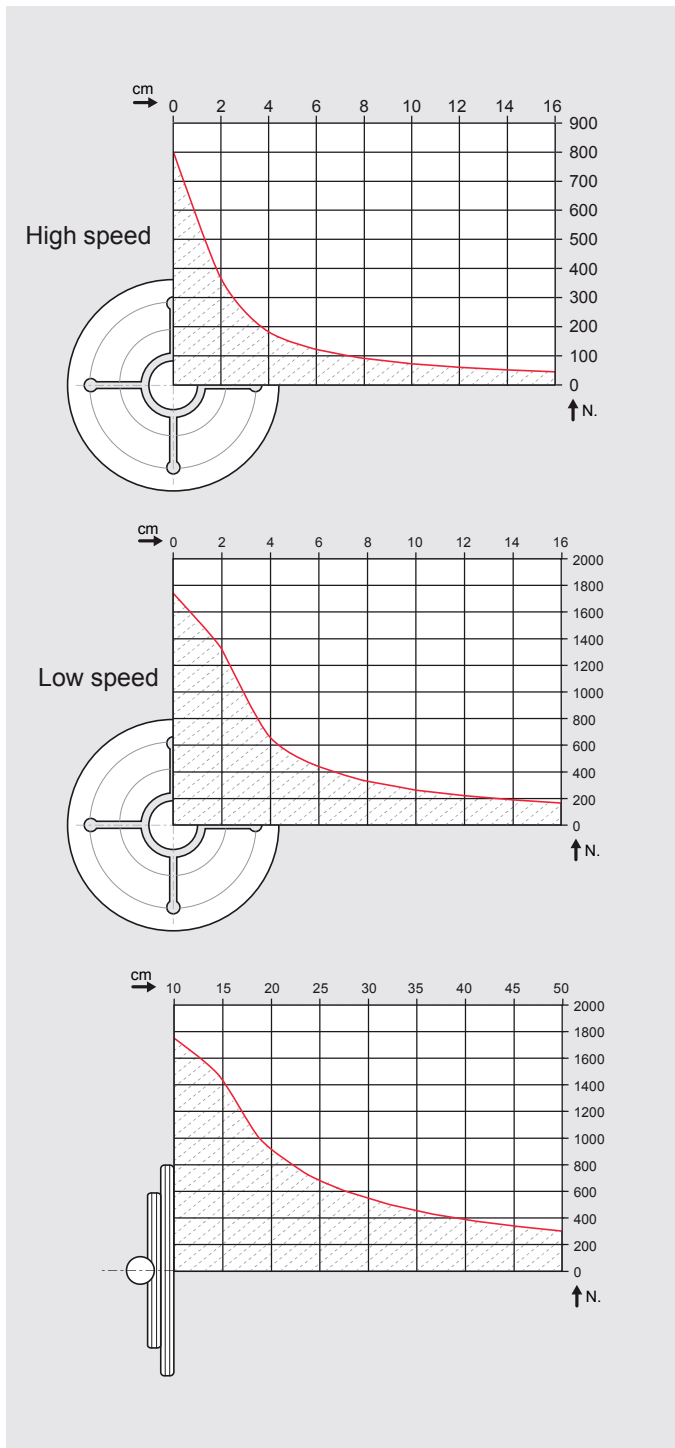
Note

Chuck 200 JW
Item no.: 91919110



PRO-Line Positioners

Welding Positioners PRO 1



When choosing your positioner, please note the center of gravity of your workpiece incl. your tensioning device.

